



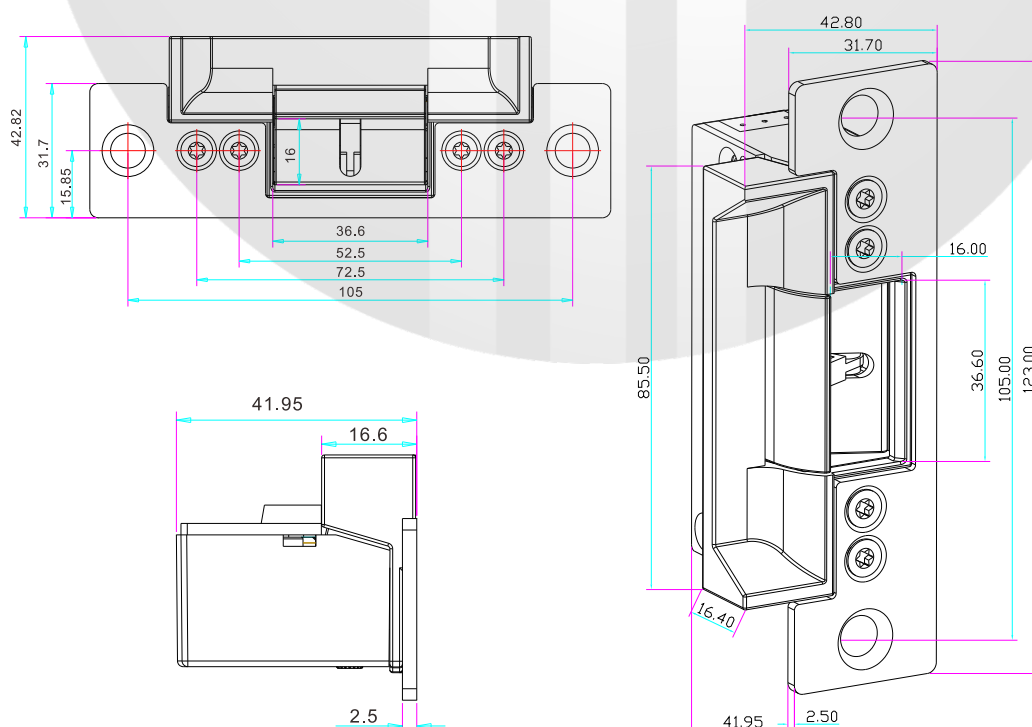
YLI ELECTRONIC

ANSI Standard Heavy Duty Electric Strike W/Signal

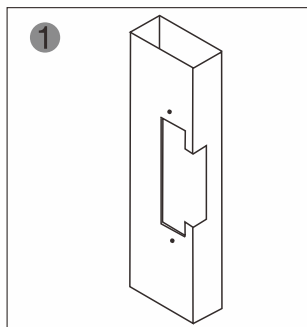
Specification

Lock size	123Lx43Wx42H(mm)
Voltage	12VDC
Current	12V/320mA
Holding Force	1000lbs
Face plate	304 stainless steel force structure
Lock	Zinc alloy(baking varnish by high temperature)
Signal output	Door status output NO/NC/COM
Feature	Fail secure(YS-136NO-UL);Fail safe(YS-136NC-UL)
Ambient Temperature Range	-20 ° C ~ + 55 ° C (-4-131 ° F)
Suitable For	Wooden Door, Metal Door, PVC Door
Weight	0.34kg
a) Static strength rating of 1000 pounds-force (4448 N). b) Dynamic strength rating of 50 foot-pounds-force (68 J). c) Endurance rating of 250,000 cycles.	

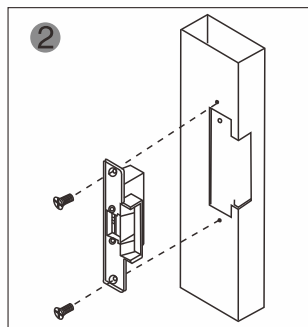
Diagram(unit:mm)



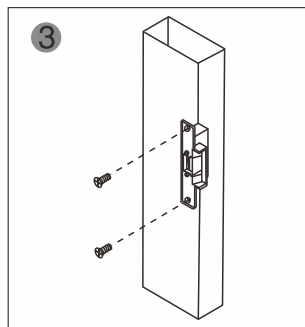
Installation



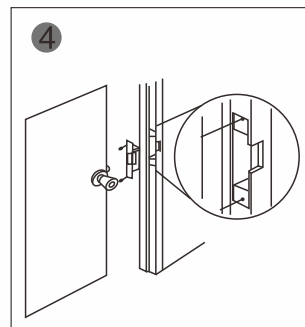
1 Cut hole according to the dimension of strike.



2 Assemble the lock and connect it to the power to test

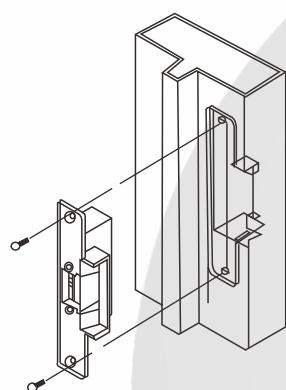


3 Fix the electric strike

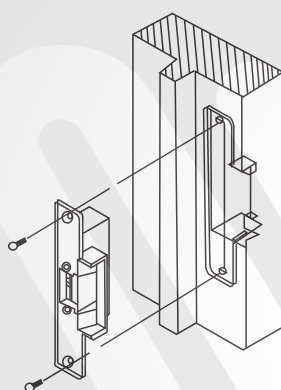


4 Finished

Suitable for



Metal Door Frame



Wooden Door Frame

+		Red	Positive
-		Black	Negative
NO		Yellow	N.C. contact output : closed status
COM		White	Common terminal
NC		Green	N.O. contact output : closed status

Wire connection

Except for Electromagnetic lock, other products (ACCESS CONTROL, POWER SUPPLY) are not provided. Wiring is for reference, please refer to the related product wiring instruction.

